

JOHN A. LAWRENCE
STATE REPRESENTATIVE
13TH LEGISLATIVE DISTRICT



HOUSE OF REPRESENTATIVES
COMMONWEALTH OF PENNSYLVANIA
HARRISBURG

HARRISBURG OFFICE
P.O. BOX 202013
HARRISBURG, PA 17120
(717) 260-6117

JENNERVILLE OFFICE
1 COMMERCE BLVD., SUITE 200
WEST GROVE, PA 19390
(610) 869-1602

Secretary Cindy Dunn
Department of Conservation and Natural Resources
Rachel Carson State Office Building
400 Market Street
Harrisburg, PA 17105

John Hallas
Director of Pennsylvania State Parks
Rachel Carson State Office Building
400 Market Street
Harrisburg, PA 17105

November 7, 2023

Dear Secretary Dunn and Director Hallas –

As you know, DCNR organized a public meeting on November 6, 2023 to gather feedback on proposals for the newly created Big Elk Creek State Park. I appreciate each of you personally attending this meeting. However, I do not appreciate the meeting's content – seeing for the first time a development plan that is completely contrary to the will of the community and out-of-step with the surrounding area. I also do not appreciate how the meeting was conducted, with zero opportunity for live question-and-answers from the large audience who had gathered for that very purpose.

As a lifelong resident of Southern Chester County, and one who lived within walking distance of the park for over twenty years, I am very familiar with the unique history of this small corner of the world. A hundred years of preservation-minded actions by nature lovers, fox-hunters, and forward thinking individuals who foresaw the value of open land directly led to the precious resource that has come into DCNR's stewardship.


The property in Elk and Franklin townships was acquired as an addition to the White Clay Creek Preserve. Everyone involved at every step of the acquisition process (including DCNR) understood the property would be managed as part of the Preserve – a semi-wilderness area with limited, low-impact use. As of today, DCNR's website still lists the property as part of the Preserve on the official White Clay Creek Preserve map (*see attached map*).

DCNR's proposal to develop this property into what amounts to a major tourist attraction is completely out of step with the desires of the community – and the clear intent of many who fought to preserve it. DCNR must immediately abandon these plans, and instead publicly commit that the Big Elk Creek State Park will be managed in the same manner as the White Clay Creek Preserve.

I have already introduced legislation on this issue and will be in further contact in the days ahead. But a great deal of controversy, angst, and turmoil can be avoided if DCNR simply announces that they have heard the will of the community, and will revert to maintaining the property as a Preserve.

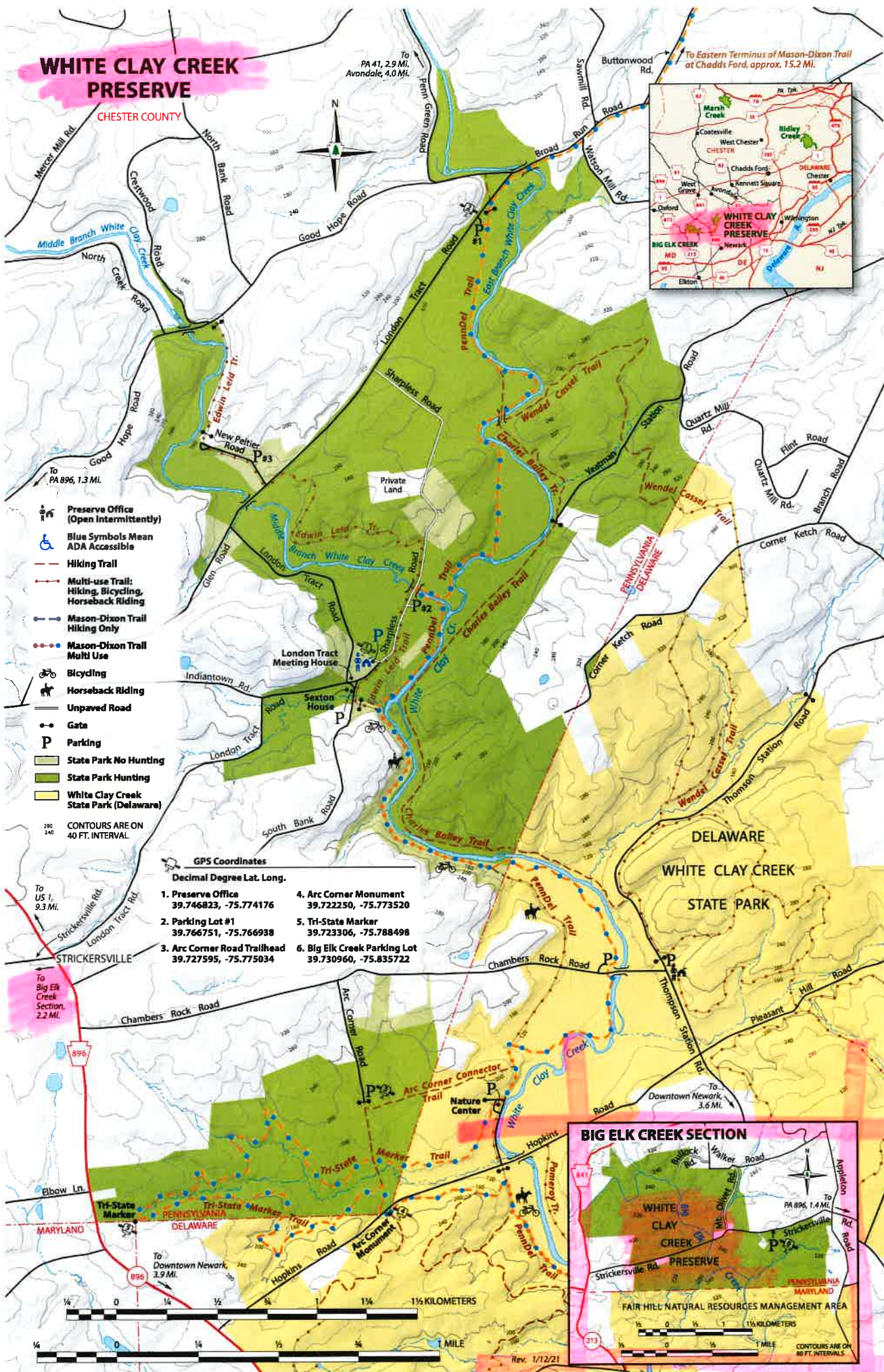
I look forward to your response on this critical issue.

Sincerely,


John Lawrence
State Representative
Commonwealth of Pennsylvania

WHITE CLAY CREEK PRESERVE

CHESTER COUNTY



- Preserve Office (Open Intermittently)
- Blue Symbols Mean ADA Accessible
- Hiking Trail
- Multi-use Trail: Hiking, Bicycling, Horseback Riding
- Mason-Dixon Trail Hiking Only
- Mason-Dixon Trail Multi Use
- Bicycling
- Horseback Riding
- Unpaved Road
- Gate
- Parking
- State Park No Hunting
- State Park Hunting
- White Clay Creek State Park (Delaware)

CONTOURS ARE ON 40 FT. INTERVAL

- GPS Coordinates**
Decimal Degree Lat. Long.
- | | |
|---|---|
| 1. Preserve Office 39.746823, -75.774176 | 4. Arc Corner Monument 39.722250, -75.773520 |
| 2. Parking Lot #1 39.766751, -75.766938 | 5. Tri-State Marker 39.723306, -75.788498 |
| 3. Arc Corner Road Trailhead 39.727595, -75.775034 | 6. Big Elk Creek Parking Lot 39.730960, -75.835722 |

